

PSM213CQMVWCE

Ballast Type: Electronic
 Input Voltage: 120 thru 277VAC ±10%
 Input Frequency: 50/60 Hz.

Starting Method: Programmed
 Lamp Connection: Series
 Unit Color: White

Unit Weight: 0.8 lb.
 Carton Quantity: 50
 Skid Quantity: 1750/1800/1800

ELECTRICAL SPECIFICATION:

Line Voltage (V)	Lamp Type	Lamp Watts	No. of Lamps	Line Current (A)	Input Power (W)	Power Factor	Max Current THD (%)	Current Crest Factor	Ballast Factor	Wiring Diagram	B.E.F.
120	CFQ13W/G24q CFTR13W/GX24q	13	1	0.14	18	≥0.96	≤12	≤1.5	1.02	152	5.67
240				0.08							
277				0.07							
120	CFQ13W/G24q CFTR13W/GX24q	13	2	0.27	32	≥0.98	≤10	≤1.4	1.01	153	3.16
240				0.13							
277				0.12							
120	CFS16W/GR10q	16	1	0.16	20	≥0.98	≤10	≤1.4	1.00	152	5.00
240				0.08							
277				0.07							
120	CFS16W/GR10q	16	2	0.32	38	≥0.98	≤10	≤1.4	0.98	153	2.58
240				0.16							
277				0.14							
120	CFQ10W/G24q	10	1	0.09	12	≥0.98	≤12	≤1.7	1.02	152	8.50
240				0.05							
277				0.05							
120	CFQ10W/G24q	10	2	0.17	21	≥0.98	≤10	≤1.6	1.02	153	4.86
240				0.09							
277				0.08							
120	CFS10W/GR10q	10	1	0.12	14	≥0.96	≤12	≤1.6	1.03	152	7.36
240				0.06							
277				0.06							
120	CFS10W/GR10q	10	2	0.22	26	≥0.98	≤10	≤1.5	1.02	153	3.92
240				0.11							
277				0.11							
120	CFT5W/2G7	5	1	0.06	7	≥0.98	≤10	≤1.6	1.10	152	15.71
240				0.03		≥0.95					
277				0.03		≥0.90					
120	CFT5W/2G7	5	2	0.10	12	≥0.98	≤15	≤1.6	1.05	153	8.75
240				0.05							
277				0.05							
120	CFT7W/2G7	7	1	0.07	9	≥0.98	≤15	≤1.5	1.07	152	11.89
240				0.04		≥0.95					
277				0.04		≥0.92					
120	CFT7W/2G7	7	2	0.14	16	≥0.98	≤12	≤1.5	1.03	153	6.44
240				0.07							
277				0.06							
120	CFT9W/2G7	9	1	0.09	11	≥0.98	≤15	≤1.5	1.05	152	9.55
240				0.05		≥0.96					
277				0.04		≥0.94					
120	CFT9W/2G7	9	2	0.16	20	≥0.98	≤10	≤1.5	1.02	153	5.10
240				0.08							
277				0.07							

ROBERTSON WORLDWIDE

13611 Thornton Rd, Blue Island, IL 60406, TEL: 1-800-323-5633, FAX: 1-877-388-2420, www.robertsonww.com

PSM213CQMVWCE

PERFORMANCE:

- High efficiency electronic ballast
- Programmed start
- Series operation
- High power factor
- Encased & potted
- Sound rated A
- All-star EOL protection:
- Internal surge protection
- Meets FCC Part 18 (Class B) for EMI and RFI consumer limits
- Meets CE requirements (120-240V)
- Meets ANSI standard C82.11
- Meets ANSI standard C62.41
- EN61547:1996, Specification for Equipment for General Lighting Purposes. EMC Requirements Per IEC Publication 61000 Electromagnetic Compatibility (EMC)
- EN55015:2000 With Amendments A1:2001 & A2:2002 (CISPAR 15)
- EN 61000-3-3: 1995 Part 3: Limits – Section 2: Limits for harmonic current emissions
- EN 61000-3-3: 1995, A1: 2001 Electromagnetic Compatibility Part 3 Limits – Section 3: Limitation of voltage fluctuations and flicker in low voltage supply systems for equipment with rated current up to 16 amps.

APPLICATION:

- Maximum case temperature: 194°F/90°C
 - Maximum ambient temperature: 140°F/60°C
 - Minimum starting temperature: -22°F/-30°C†
 - Not recommended for extreme temperature variations
 - Lamp starts: >50,000 starts
 - Remote mounting: 18 ft.
 - Compatible with leading manufacturers of Emergency Battery Packs
- † Please consult lamp manufacturer's data regarding Lumen Output vs. Ambient Temperature.

SAFETY:

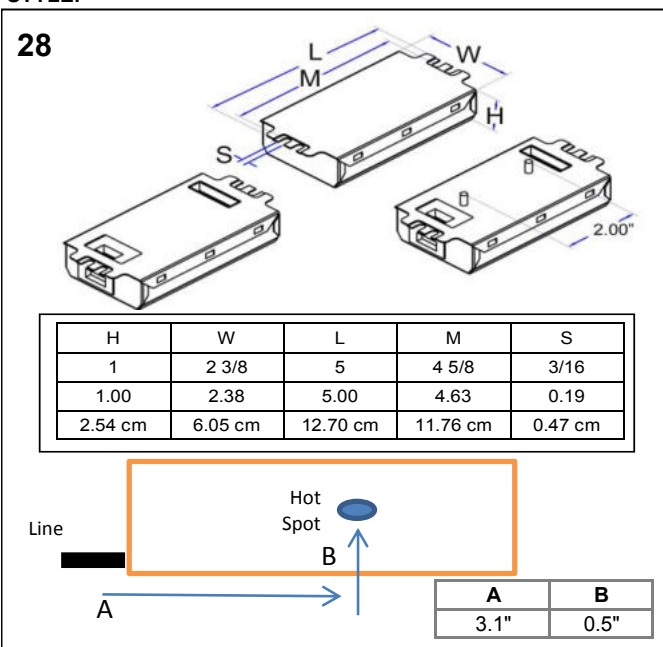
- UL/935 (Class P, Type HL, Type CC, Type 1 outdoor) listed
- CSA/C22.2 certified
- RoHS Compliant
- No PCB's

ORDERING INFORMATION:

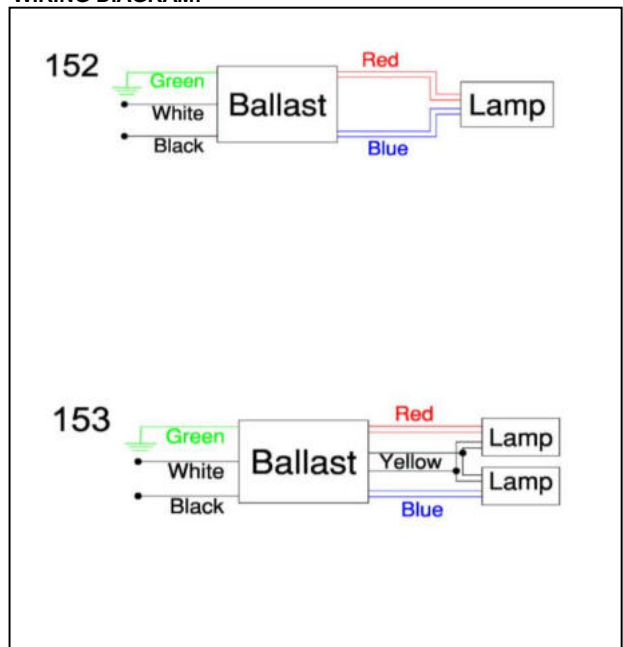
- Side Leads - W (Standard lead lengths 12")
- Dual Entry - DW
- Dual Entry with Studs - DSW
- Use 18AWG solid copper wire (stripped to 3/8")

U.S. PATENT NUMBERS: 6,366,032 B1 and 6,420,838 B1

STYLE:



WIRING DIAGRAM:



WARRANTY:

Robertson Worldwide warrants to the purchaser that this ballast will be free from defects in material or workmanship for a period of 5 years from date of manufacture when properly installed and under normal conditions of use. For more information on Robertson Worldwide's ballasts, call 1-800-323-5633 or visit www.robertsonww.com. Specifications subject to change without notice

Revised 06/24/09

ROBERTSON WORLDWIDE

13611 Thornton Rd, Blue Island, IL 60406, TEL: 1-800-323-5633, FAX: 1-877-388-2420, www.robertsonww.com